

# RAINBOW®



## RAINBOW PIGLET (5 DEVICES)

STRIPS FOR DETECTION OF  
VARIOUS PATHOGENS IN  
PIGLET FAECES



HOW TO PROCEED



1

Take the faeces directly from the rectum of the piglet. If the samples are liquid, take a spoonful.



2

If faeces are solid, remove the excess amount using a spatula.



3

Dilute its content in the liquid of the small tube called sample tube.



4

Shake the sample tube to homogenize well.



5

Tap the sample tube on a hard surface so that all the liquid is collected at the bottom of the tube.



6

Tear the aluminium envelope open at the notch. Once the device has been taken out of the envelope its stability is of short duration, especially in a humid environment.



7

Insert the sample tube into the strip tube.



8



9



10

■ Screw the top of the strip tube.

You must hear two separate clicks, for perforation of superior and inferior septa of the sample tube.

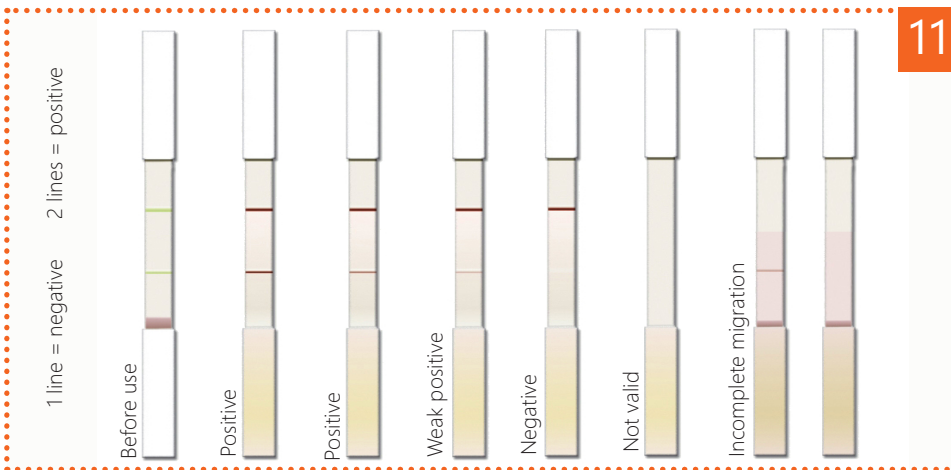
Leave the device vertically on a flat surface and wait for 10 minutes.

The liquid contained in the sample tube moves to the strip tube and slowly migrates along the strips.

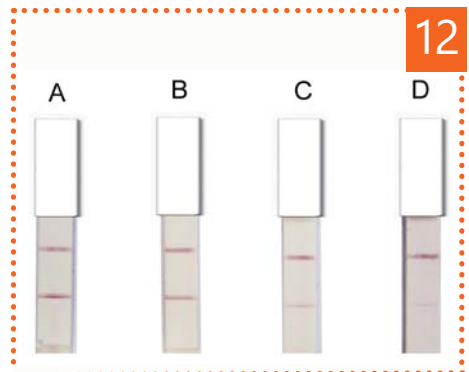
■ Sometimes, especially when the sample isn't homogenized, liquid migration can stop on one or more strips. In that case, tap the end of the strip tube on hard surface to allow migration to start again.

■ After 10 minutes, read the results using picture 11 as standard.

For *Clostridium perfringens* interpretation use picture 12.



11



12

A)  $10^9$  CFU/g of faeces    C)  $10^7$  CFU/g of faeces  
B)  $10^8$  CFU/g of faeces    D)  $< 10^6$  CFU/g of faeces

Product name	Rotavirus	E.coli F4 (K88)	E.coli F5 (K99)	E.coli F18	E.coli F4i	<i>Clostridium perfringens</i>	<i>Clostridium difficile</i>	<i>Cryptosporidium parvum</i>
BIO K 351	×	×	×	×	×	×	×	×
BIO K 361		×	×	×	×			
BIO K 372	×	×		×		×		
BIO K 393	×	×				×		

### Precautions for use

- Store kits in a dry place at room temperature.
- Wear gloves while carrying out the test.
- The analysed sample shouldn't be too concentrated. Do not prepare a sample volume greater than a spoonful.
- Dispose of the device in keeping with legislation on environment protection and management of biological waste.



Distribuito in ITALIA da  
**Li StarFish S.r.l.**  
Via Cavour, 35  
20063 Cernusco S/N (MI)  
telefono 02-92150794  
fax 02-92157285  
info@listarfish.it  
www.listarfish.it



Bio-X Diagnostics is ISO 9001:2008 certified to assure the best to its customers